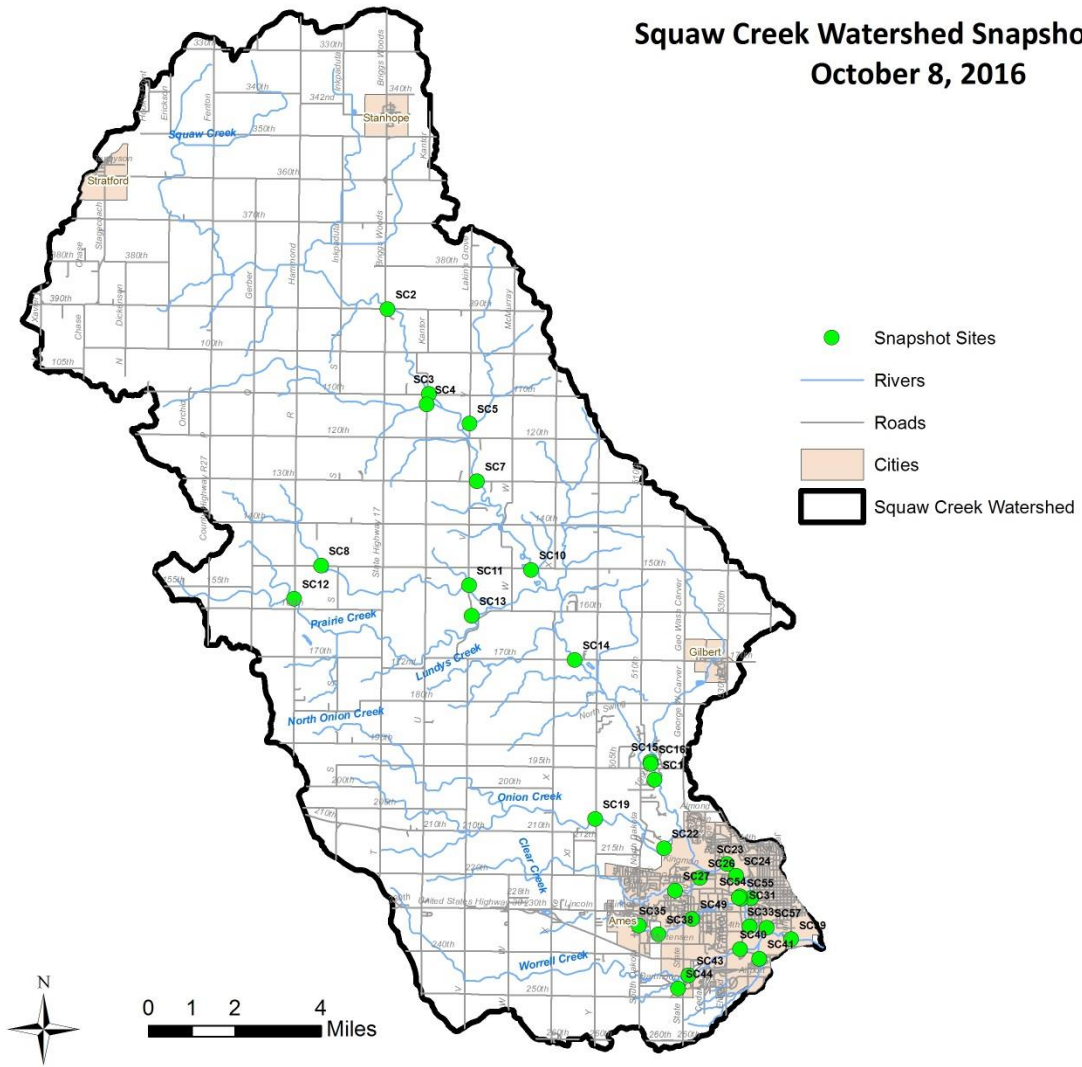
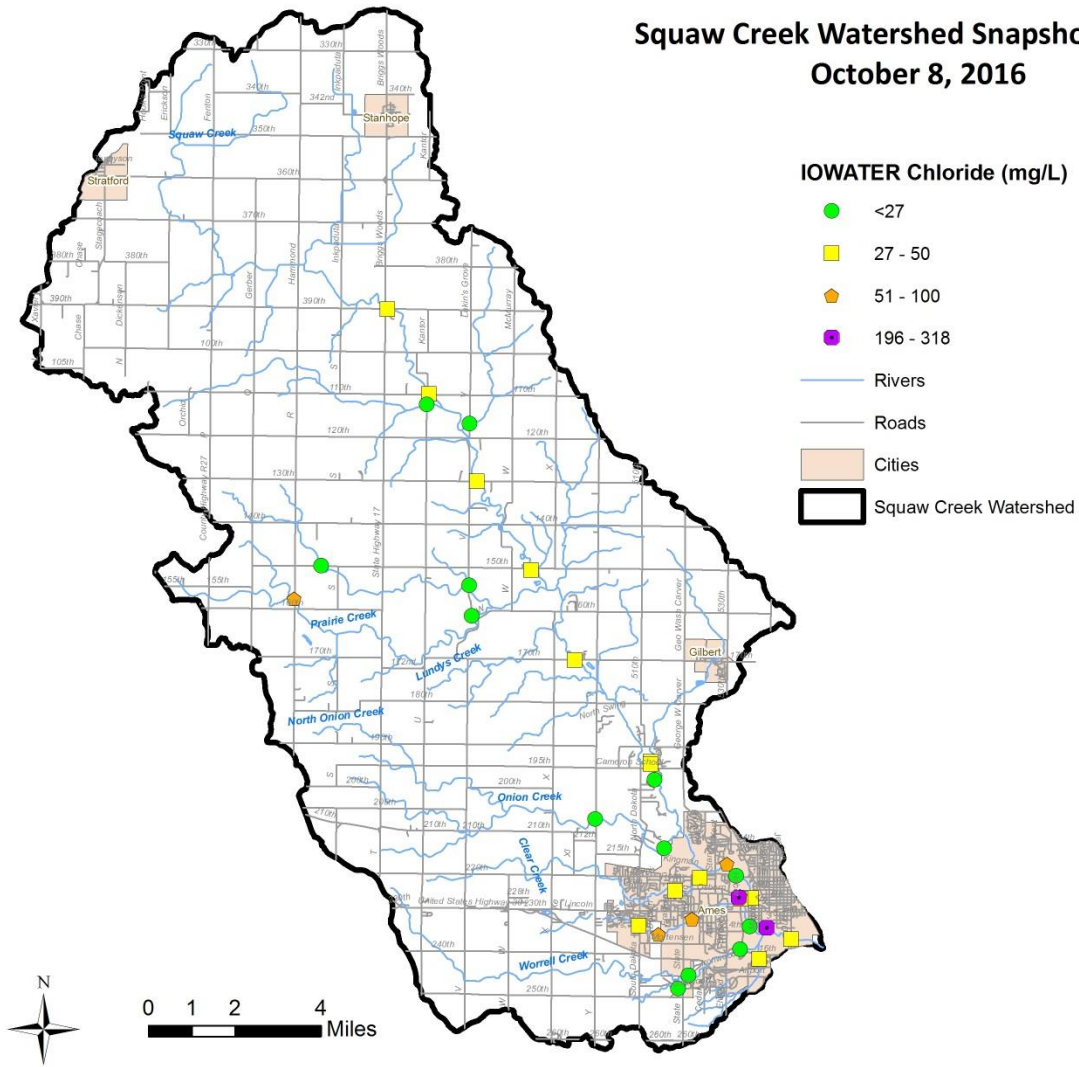


Squaw Creek Watershed Snapshot Results October 8, 2016

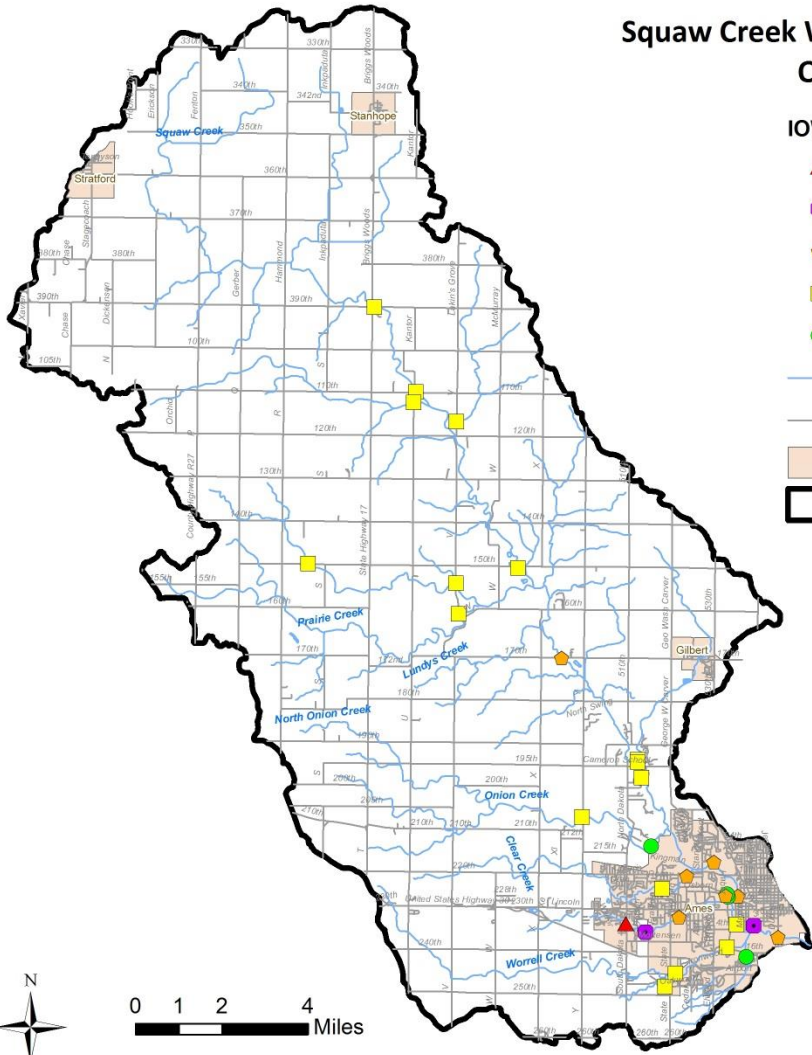


Squaw Creek Watershed Snapshot Results October 8, 2016



Squaw Creek Watershed Snapshot Results October 8, 2016

IOWATER Dissolved Oxygen (mg/L)

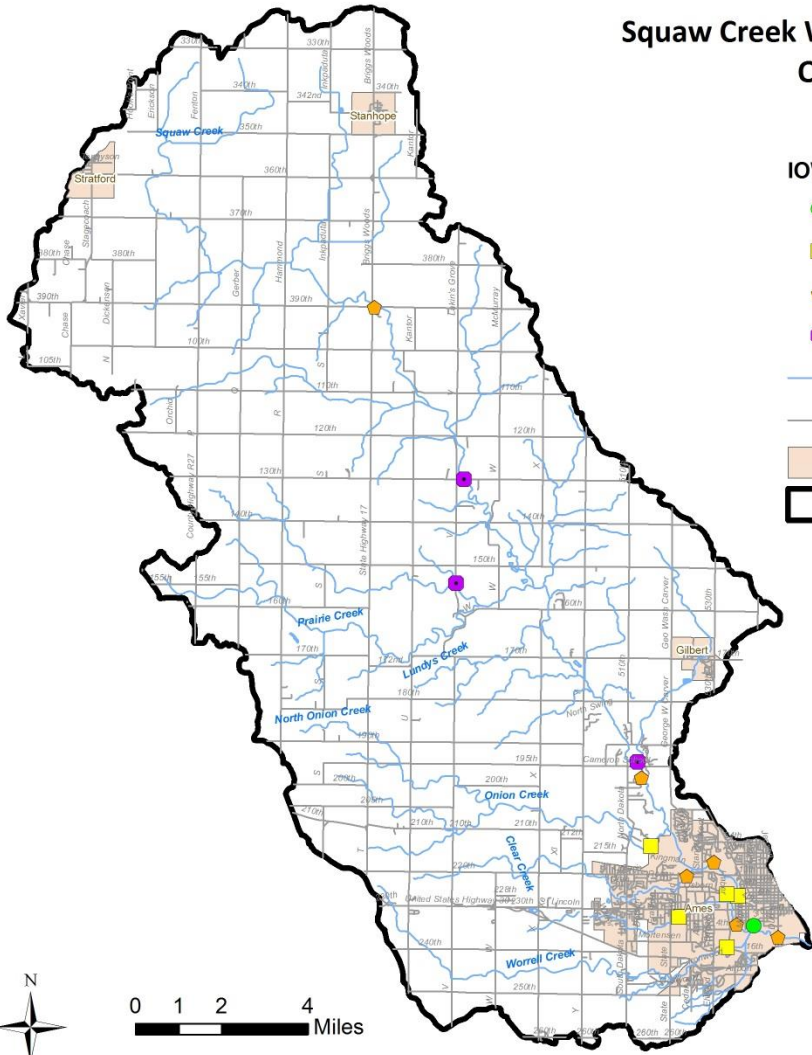


Squaw Creek Watershed Snapshot Results October 8, 2016

IOWATER E. coli Bacteria (CFU/100 ml)

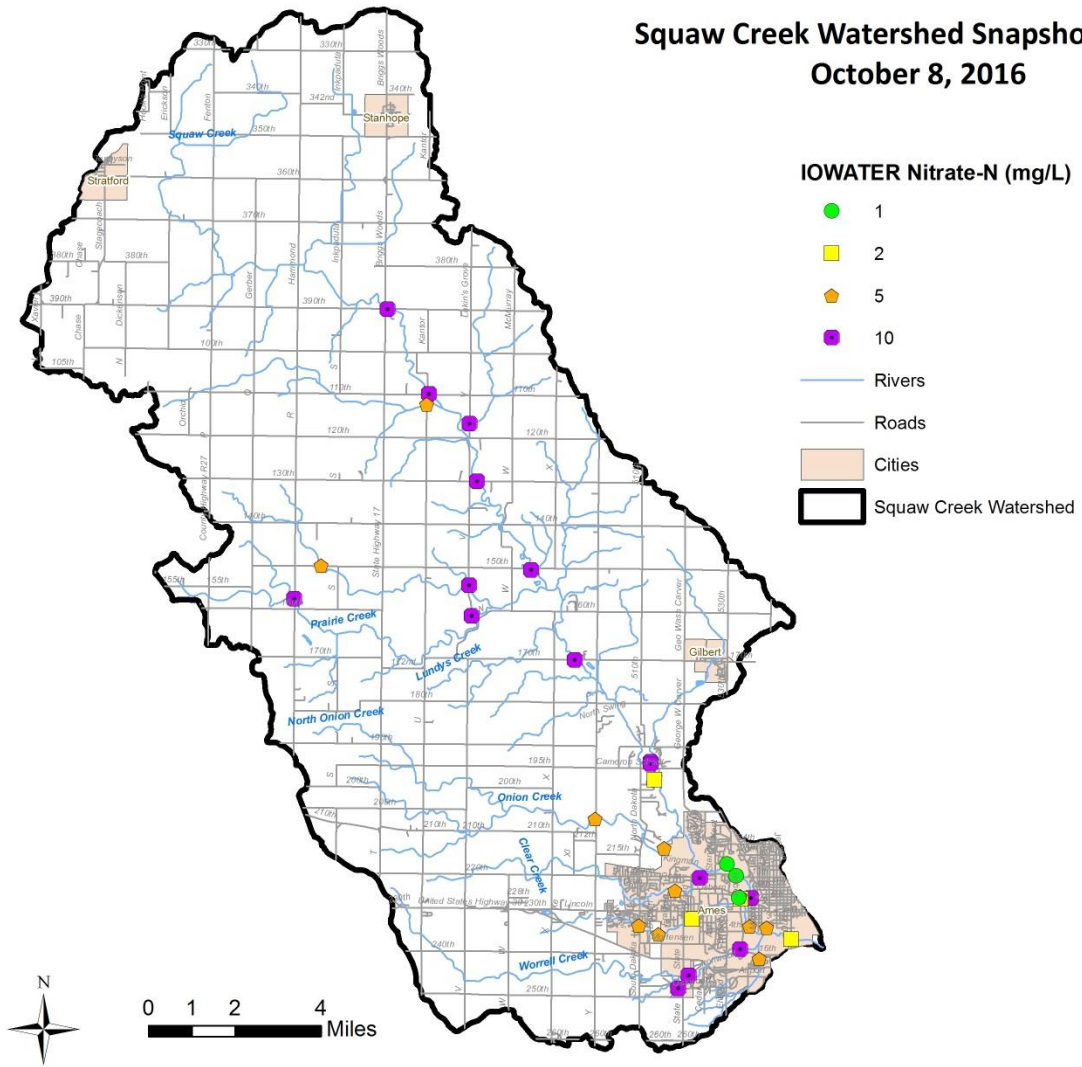
- 0
- 100 - 233
- ◆ 267 - 433
- 600 - 1,000

- Rivers
- Roads
- Cities
- Squaw Creek Watershed



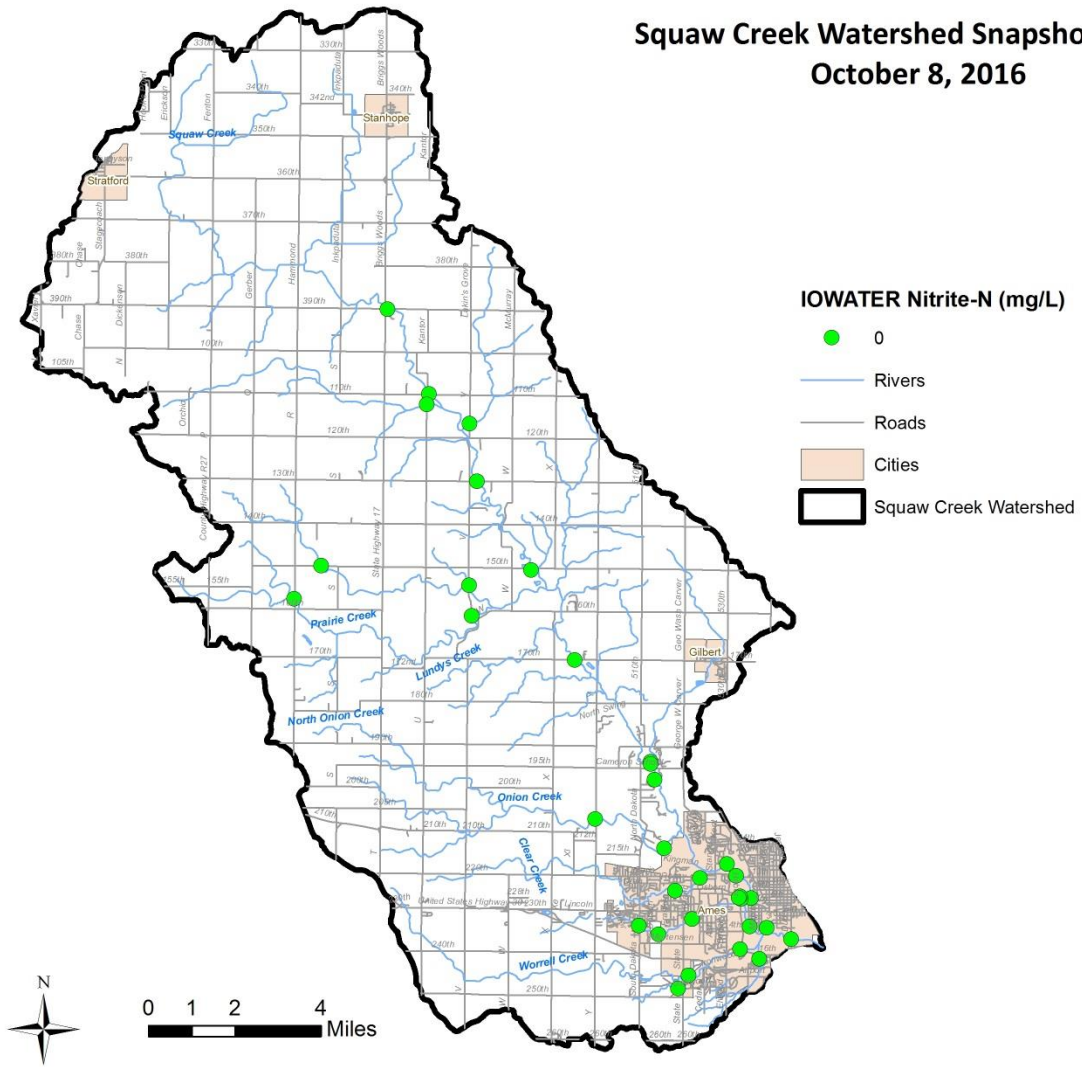
0 1 2 4 Miles

Squaw Creek Watershed Snapshot Results October 8, 2016

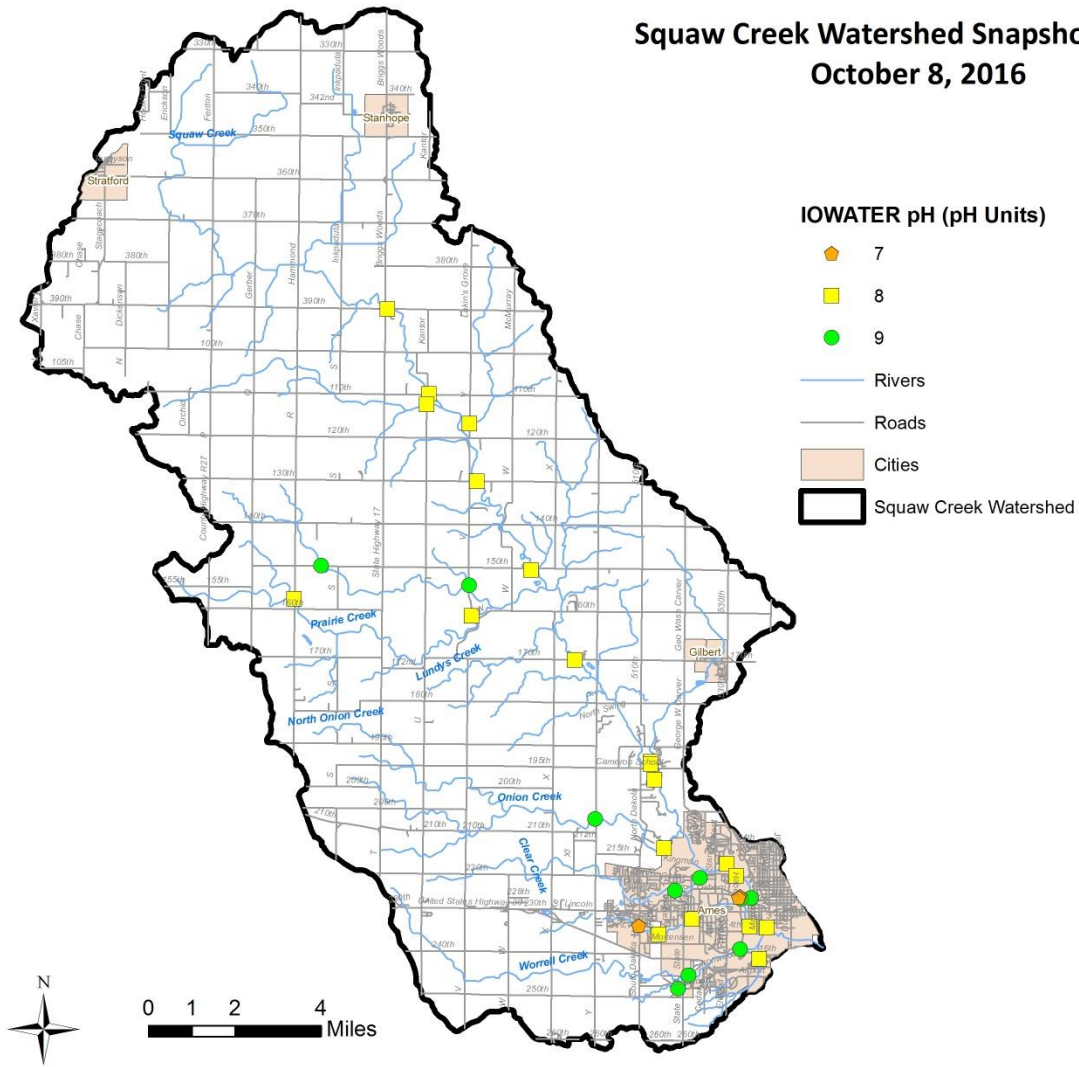


0 1 2 4 Miles

Squaw Creek Watershed Snapshot Results October 8, 2016



Squaw Creek Watershed Snapshot Results October 8, 2016

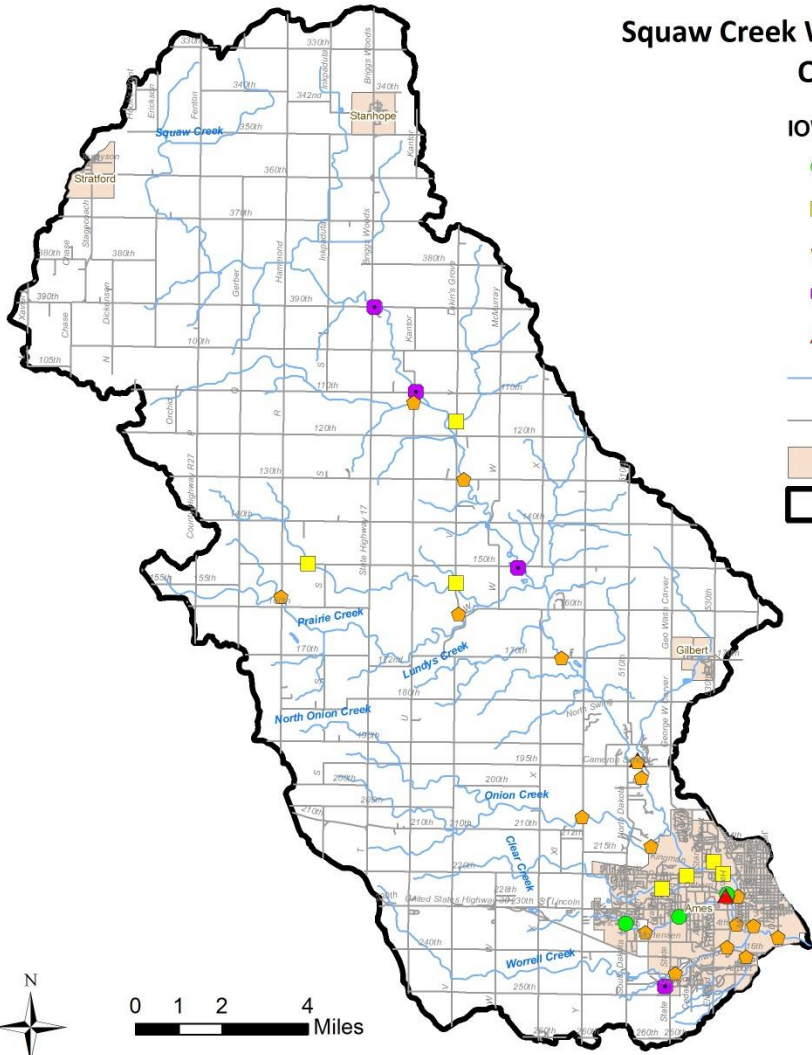


Squaw Creek Watershed Snapshot Results October 8, 2016

IOWATER Phosphate (mg/L)

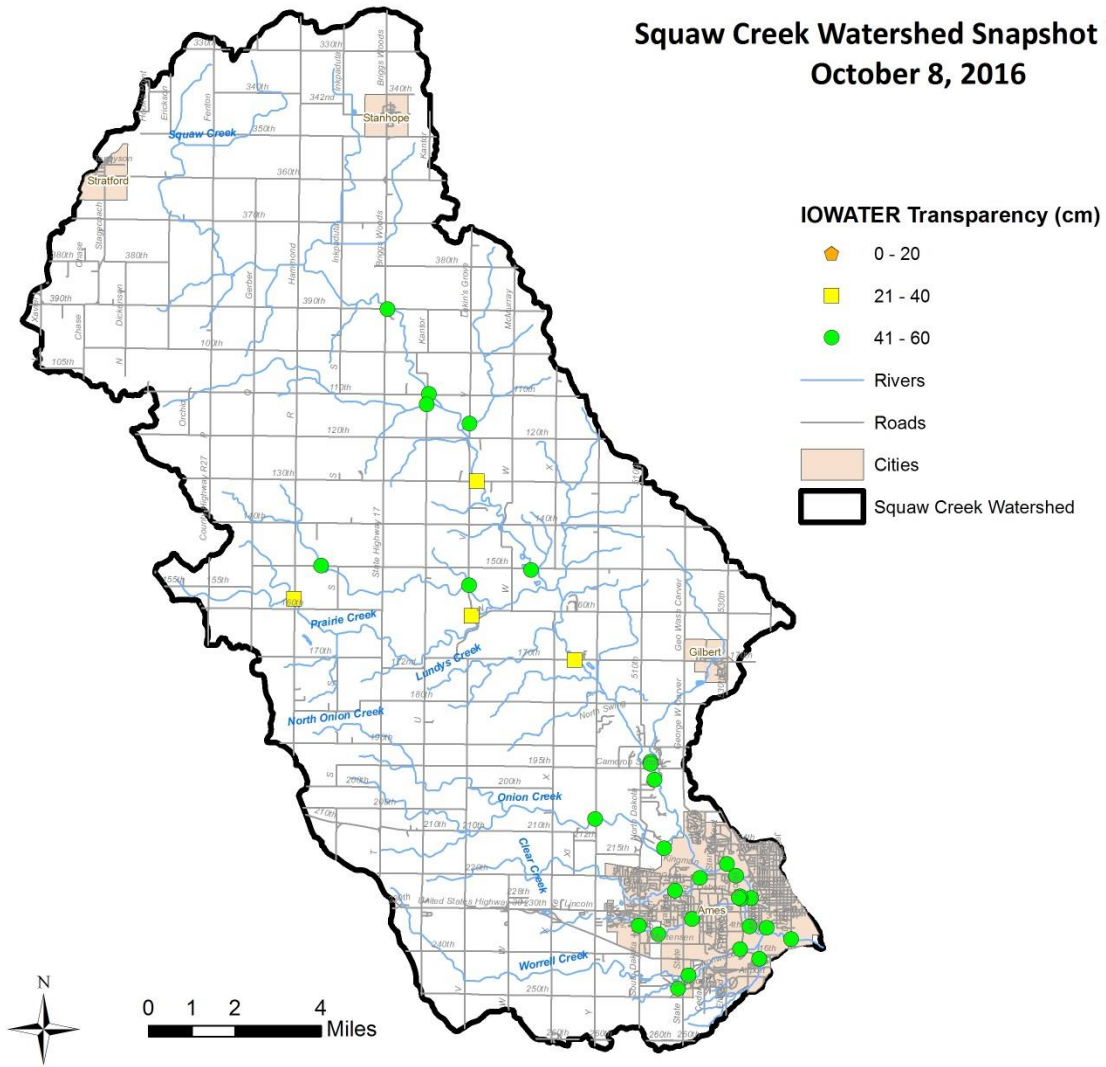
- 0
- 0.1 - 0.2
- ◆ 0.3 - 0.4
- 0.6 - 0.8
- ▲ 2 - 6

- Rivers
- Roads
- Cities
- Squaw Creek Watershed



0 1 2 4 Miles

Squaw Creek Watershed Snapshot Results October 8, 2016



Squaw Creek Watershed Snapshot Results October 8, 2016

